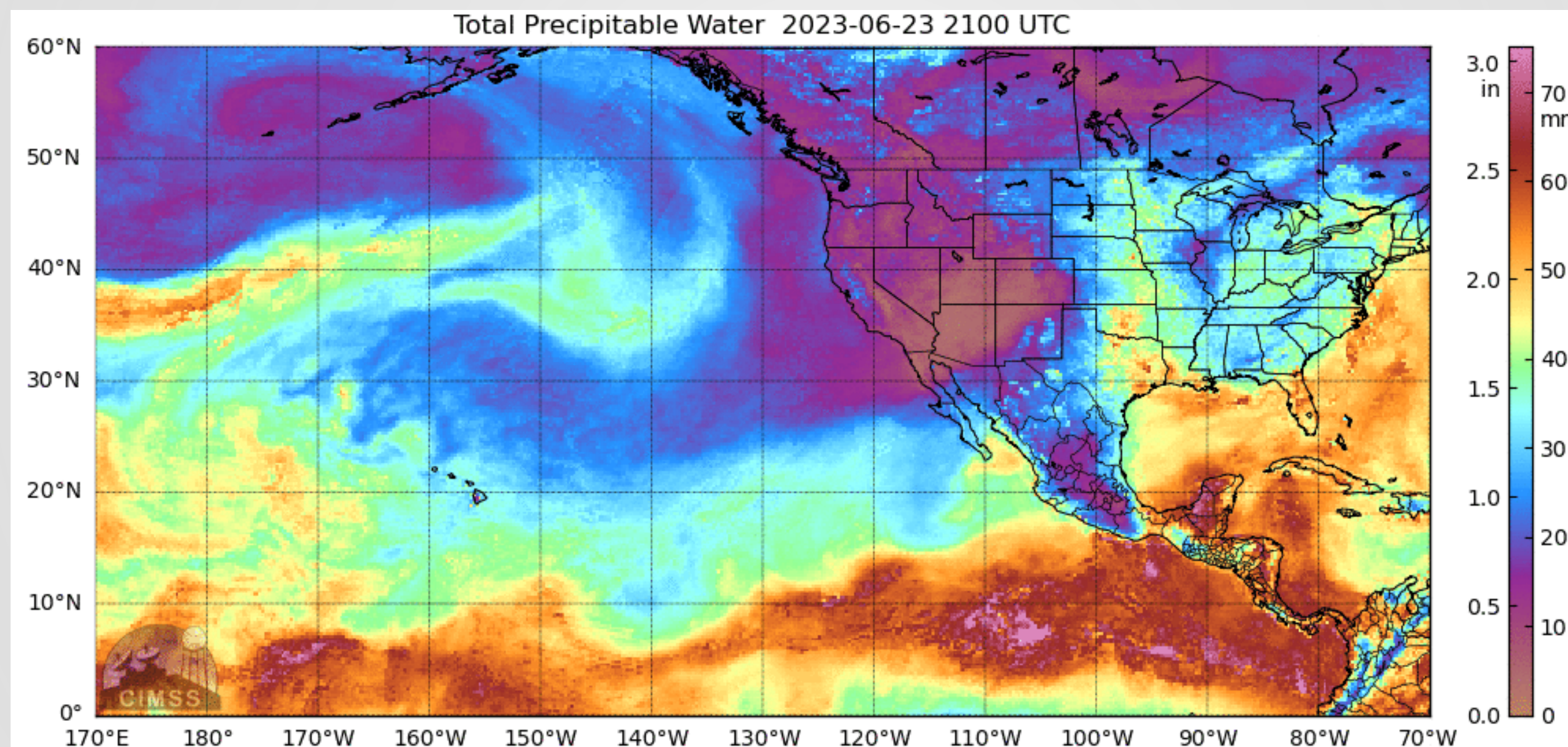


# Weather and Hydrologic Impacts Discussion

## June 28, 2023



Michael Anderson, State Climatologist

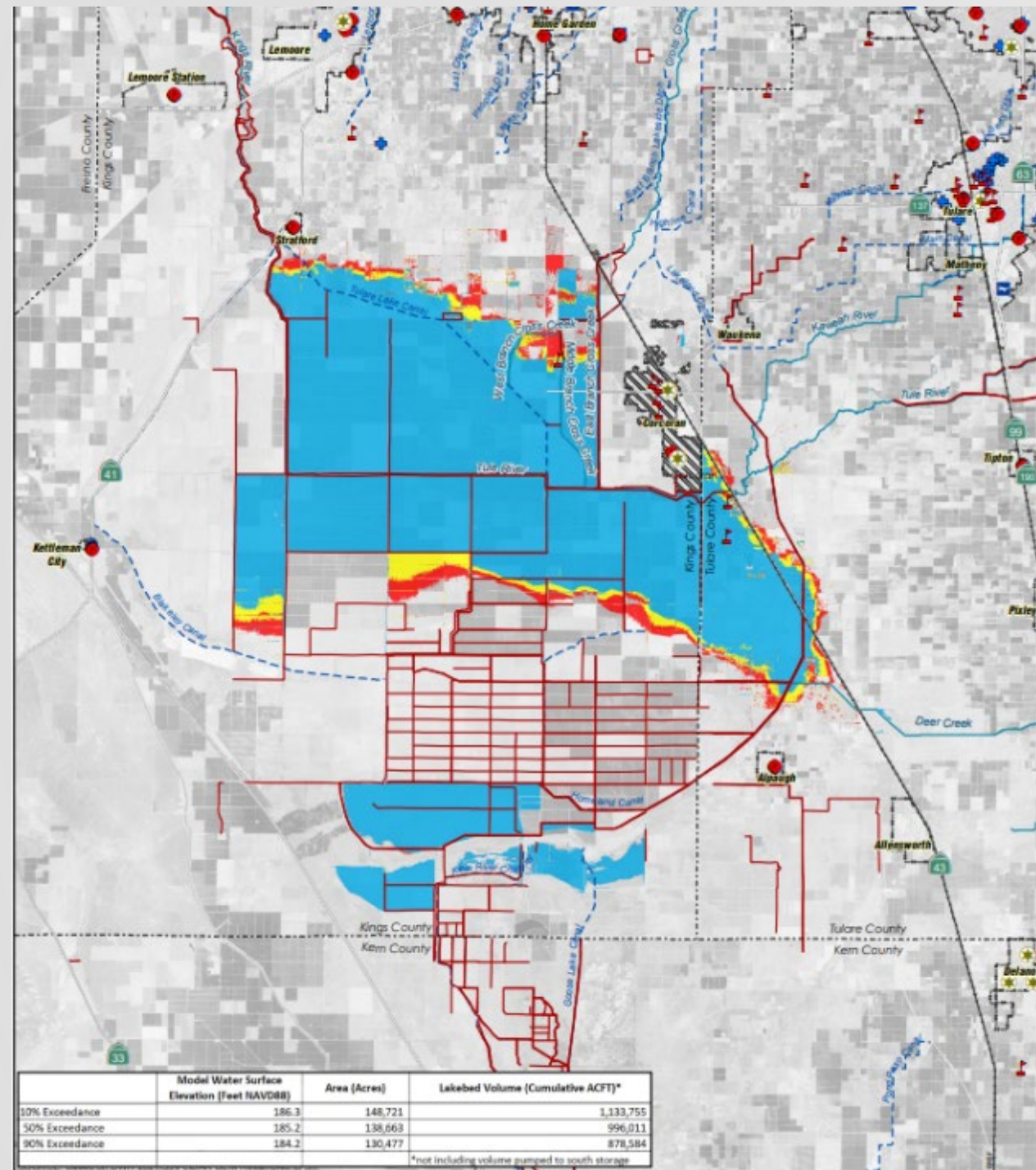
# Key Points

- Flood Operations Center still monitoring and providing any needed flood operations response
- Peak snowmelt occurred earlier in June; renewed but lower rises will occur with arriving heat
- No further flood flows being sent to the Tulare Lakebed. Lake levels have peaked and are beginning to fall
- Kern Intertie no longer in operation
- Tulare Lakebed Advance Planning Unit provided key information on lake levels to inform flood response actions and coordinate with local communities

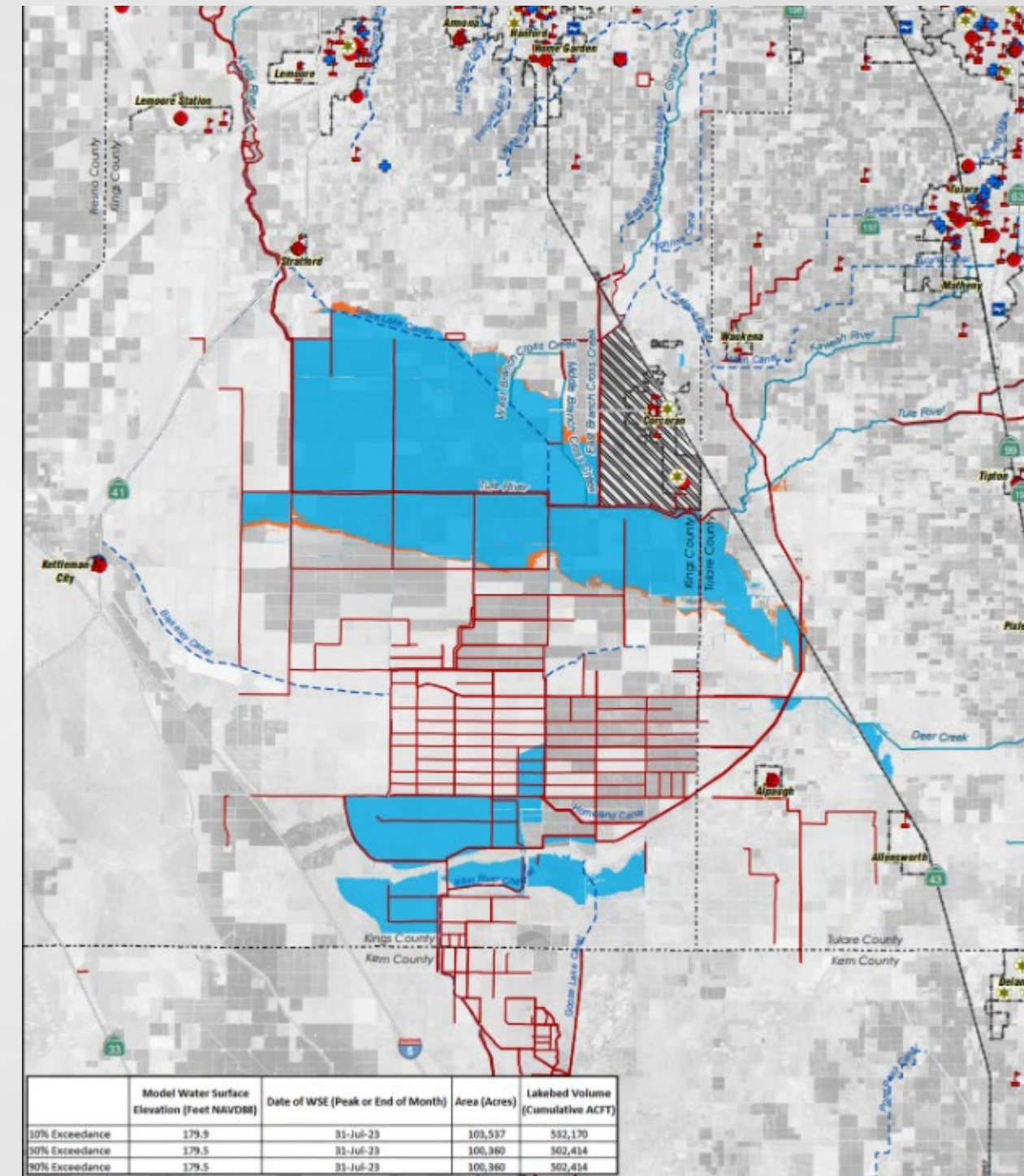




# Tulare Lake Maps – May 1 & June 28



May 1 Forecast of July 31 conditions



June 28 Forecast of July 31 conditions





# Tulare Lake – Sentinel Satellite Data



May 21, 2023

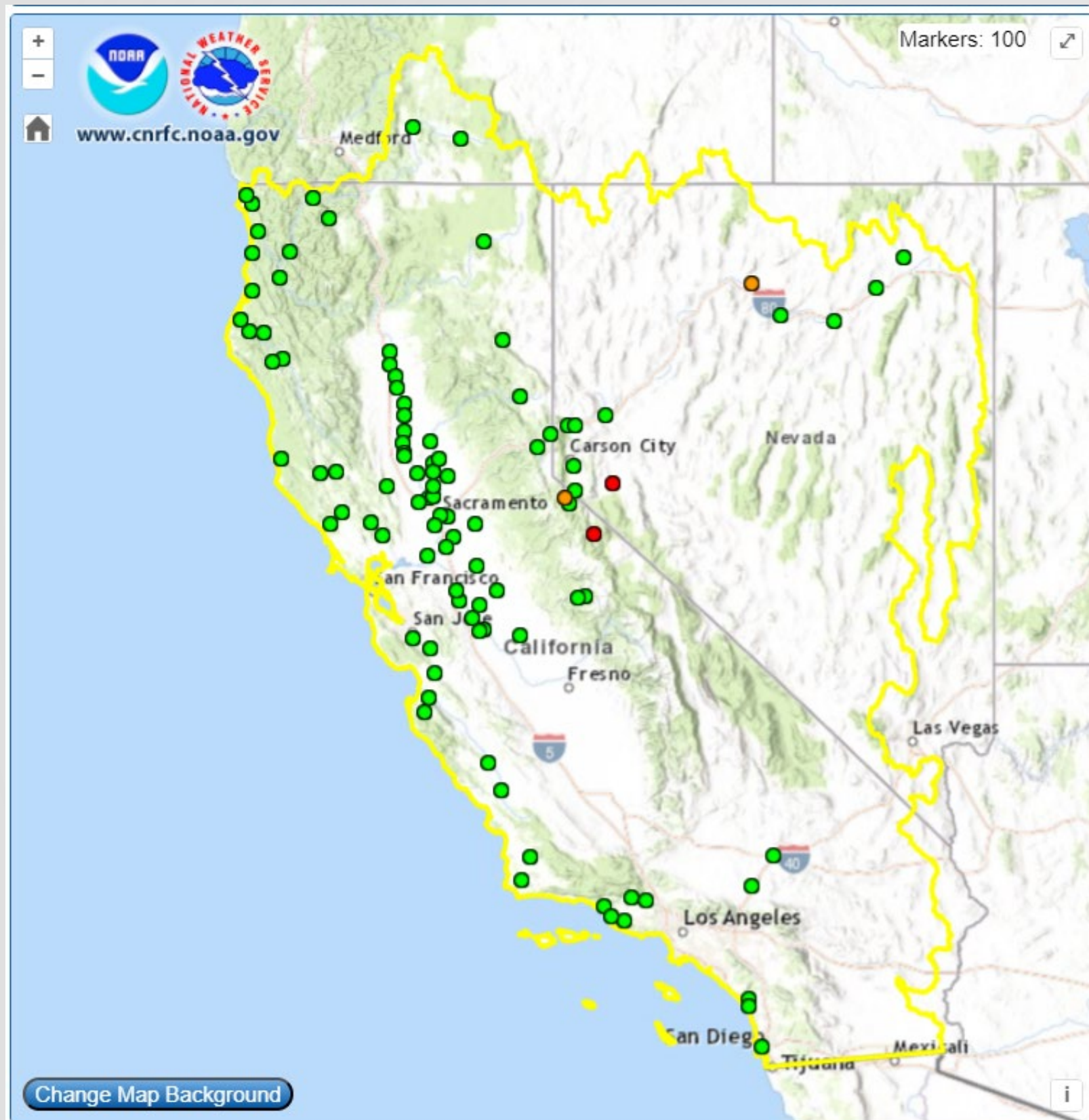


June 25, 2023





# Hydrologic Conditions Overview



The number inside each circle above represents the number of gages with forecast conditions inside that category.

Impacts Expected through July 3, 2023

0 Location Exceeding Danger Stage

2 Locations Exceeding Flood Stage

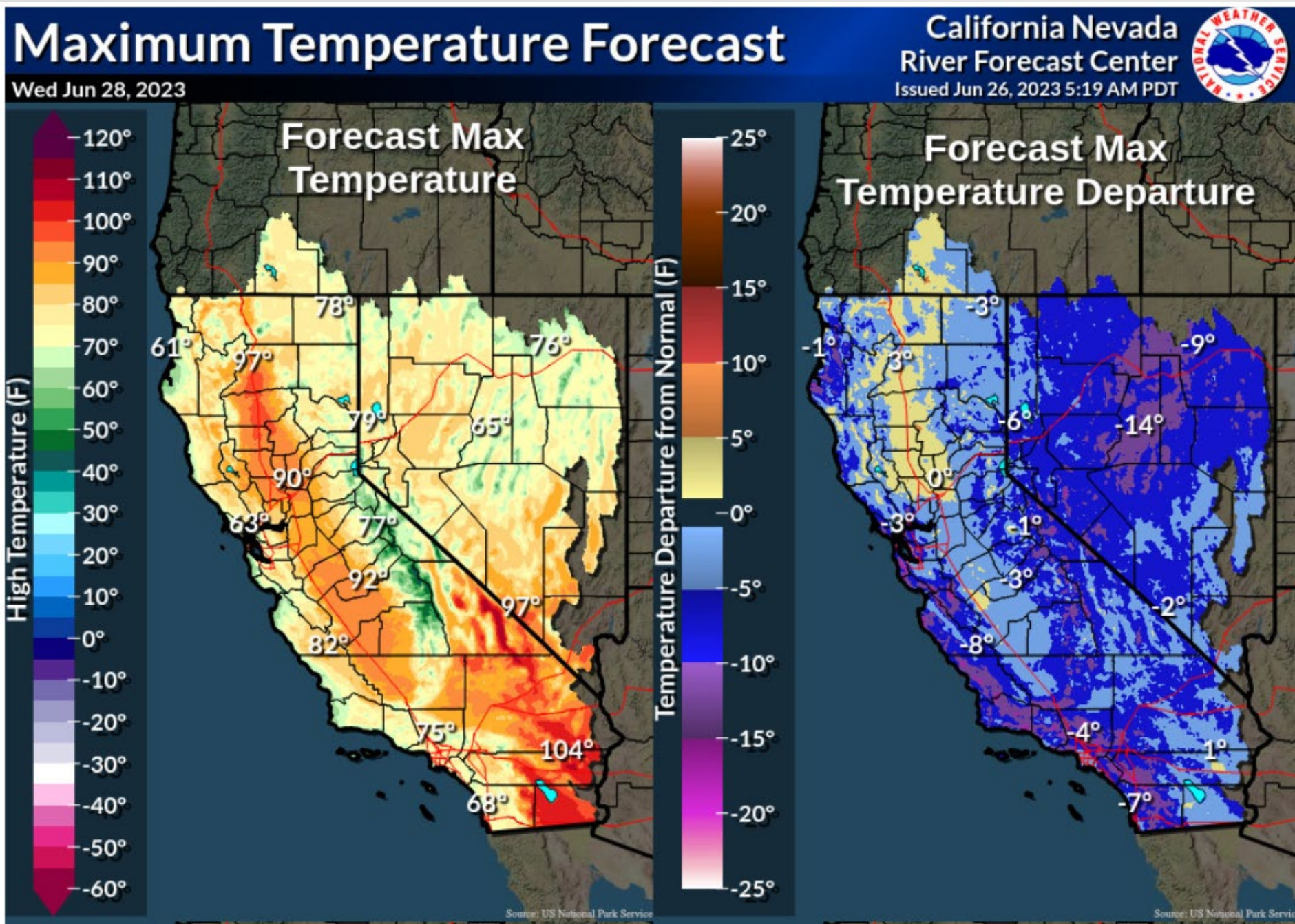
2 Locations Exceeding Monitor Stage

Heat causing renewed river rises in mountains

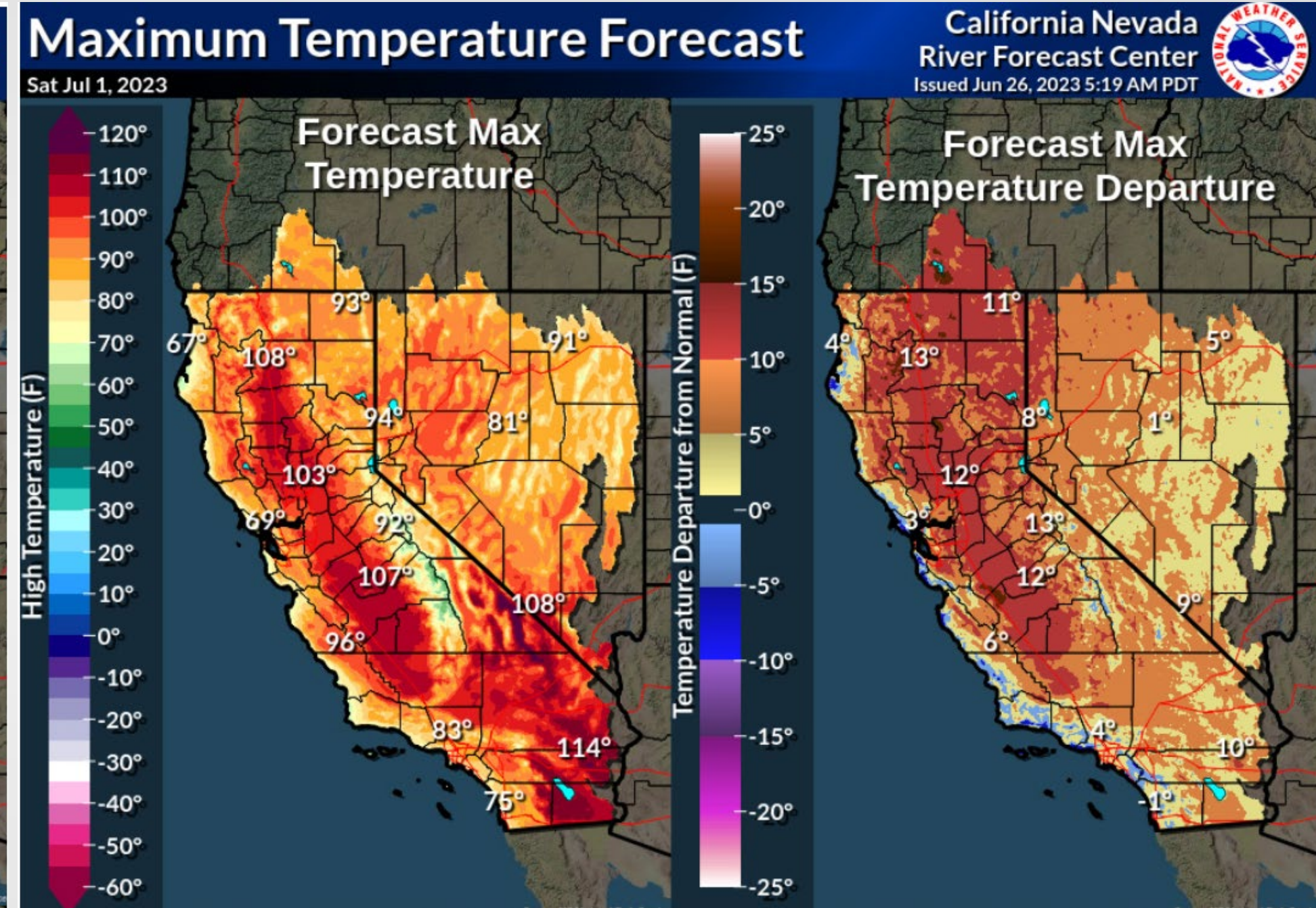
Reservoirs continue to maintain capability to manage flows downstream



# Temperature Maps



June 28, 2023



July 1, 2023









# El Niño expected to influence next winter

- Current tropical Pacific Ocean sea surface temperatures indicative of El Niño conditions
- Outlooks expect conditions to persist through coming winter
- Both wet (2010) and dry (1992) outcomes possible for CA

