



BAKERSFIELD

Bakersfield/Kern County



10-Point Action Plan

Caltrans is coordinating maintenance and landscape schedules to amplify litter collection in problem areas, taking advantage of previously scheduled closures to minimize impact on the traveling public. Caltrans is also replacing older sweepers with new models, which will help keep highways clean.

1. Maintenance Crews performing frequent patrols to address litter, fence repairs, graffiti, damaged irrigation and encampments.
 - Patrols will be done twice a week specifically to address Customer Service Requests.
2. Landscape Crews repairing irrigation, clearing litter, and removing overgrown areas.
 - Landscape crews to focus on repairing damaged irrigation and clearing overgrowth to discourage encampments within landscaped freeways.



State Route 99 – Eastbound 58/Stockdale Highway Transition Ramp

3. Larger maintenance activities around specific roadways and ramps to keep areas clear of litter, weeds, brush overgrowth, graffiti and conduct pavement and electrical repairs, stenciling, and sweeping.
 - Enhanced efforts on SR-58 from Stockdale Highway to SR-184, SR-99 from Route 119 to 7th Standard Road, SR-178 from SR-204 to SR-184, and SR-204 from SR-58 to SR-99
 - The Special People Program (SPP) crews will focus on ramps in the Downtown area. The SPP crews are contracted with the Butte County Office of Education and currently includes a Veterans Outreach Program (VOP) crew.
 - Have more frequent swarm maintenance efforts where multiple crews utilize closures to address multiple activities, such as litter, weeds, brush overgrowth, graffiti, pavement repairs, electrical, stenciling, and sweeping.
4. Dedicated South Region Coordinator to oversee beautification efforts.
 - A coordinator will be based in Bakersfield to address cleanups associated with encampments.
 - The coordinator will work with the Adopt-A-Highway Coordinator based in Bakersfield and the landscape crews for a coordinated effort to clean litter and address encampments.



State Route 99 – Eastbound 58/Stockdale Highway Transition Ramp



Southbound State Route 58 Martin Luther King Blvd.

5. Partnerships with the City of Bakersfield and surrounding governments and community-based organizations to focus beautification efforts in and around downtown areas and roadways.
 - Utilize the bimonthly Keep Bakersfield Beautiful meeting to prioritize cleanups and collaborate on joint beautification efforts with the City and community-based organizations.
 - Through delegated maintenance agreements (DMAs) with the City of Bakersfield and the County of Kern and with funding from Kern COG, crews with the Open Door Network to remove litter from routes within the City of Bakersfield while providing transitional employment to those in need.
 - Engage CHP to increase litter enforcement efforts on downtown corridors.
 - Collaborate with the Open Door Network and Flood Ministries to provide resources and outreach services to persons experiencing homelessness in the Bakersfield area.
 - Explore potential future projects with the City of Bakersfield to enhance the landscape and bring recycled water to the State right-of-way.



Southbound 99 – Hank Road

6. Enhanced public outreach campaign.
 - Increase Adopt-A-Highway Program outreach to encourage more participation for groups that are interested in adopting sections of highways in the Bakersfield area.
 - Increase social media posts across all district platforms including Facebook, Instagram, X, and Threads. Include before/after photos of cleanups and education efforts on the impact of litters and the importance of proper disposal. Urge the public to do their part to help keep California clean.
 - Radio campaign echoing anti-litter social media campaigns.
7. Implement push notifications through QuickMap App to alert travelers of lane closures in the area of work.
 - Push notifications will indicate when workers are on foot for beautification efforts.
8. Update changeable message signs to alert travelers about worker safety and beautification efforts.
 - Utilize the changeable message signs for worker safety messages that also acknowledge beautification efforts when workers are on foot.



State Route 99 – Olive Drive



State Route 99 – Olive Drive

9. Keep construction areas clear of debris and litter.
 - Work with the contractors in the numerous construction zones to remove litter and increase sweeping.
10. Utilize new sweepers to replace older units to ensure expediency of cleanup efforts.
 - The unreliable old sweepers are being replaced with new units.
 - Sweeping will occur monthly along shoulder along the main highways in Bakersfield.



Weedpatch Hwy – Westbound 58 onramp



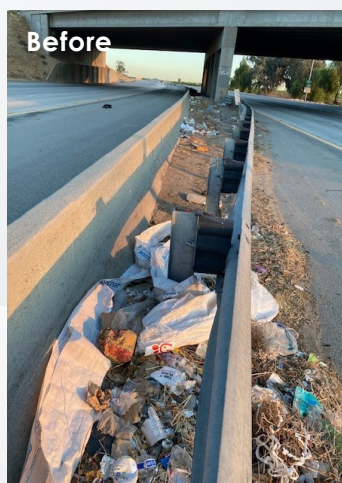
Kern County Tire Drop-off Events – Shafter, Taft and Bena Landfills



Bakersfield Maintenance and Clean California Crews



State Route 99 – Bakersfield



Southbound State Route 99 at Lerdo Highway